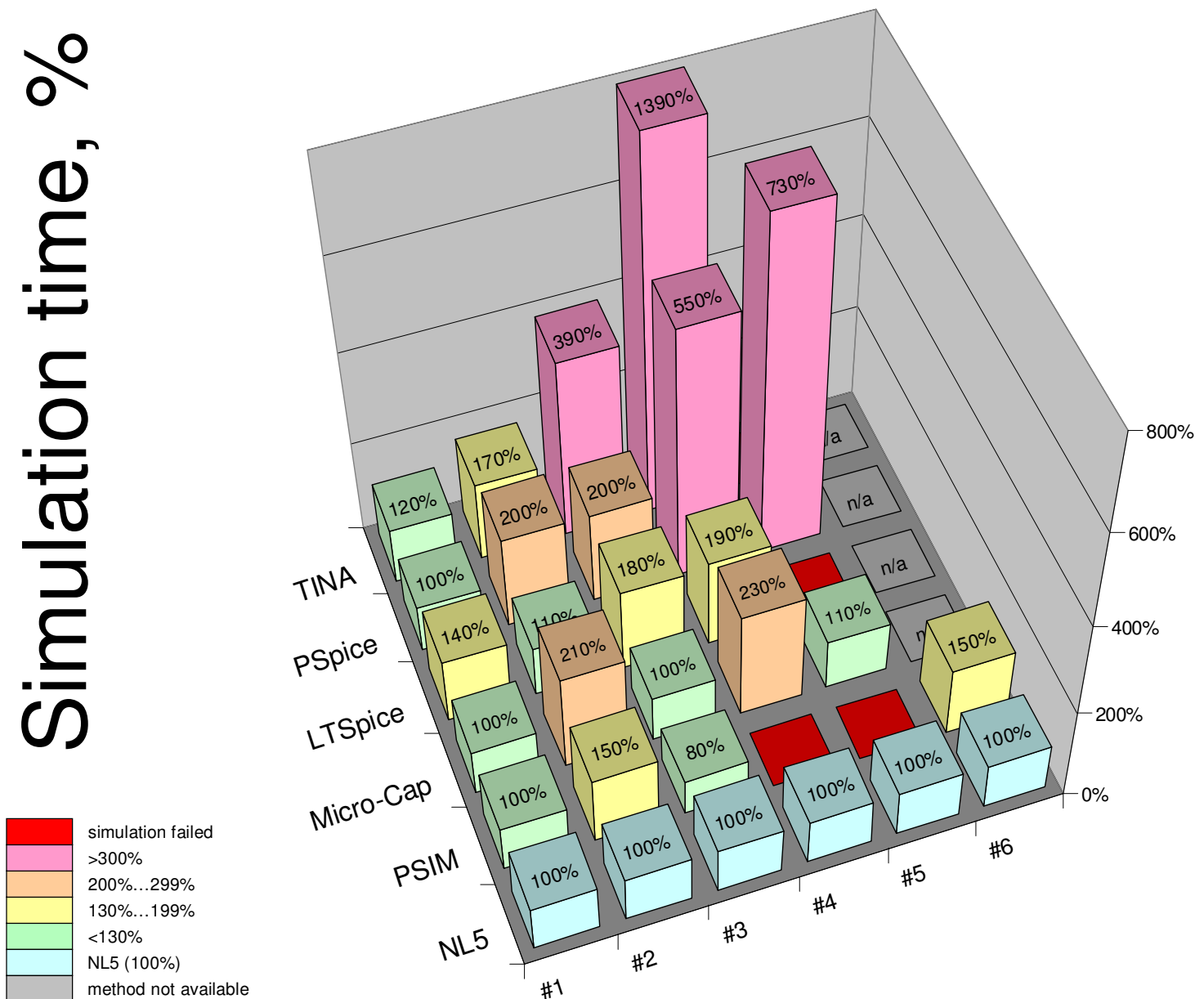


Performance comparison has been done by running transient analysis on reasonably simple circuits, where the result of simulation is predictable and well known. An exception is circuit #6, for which AC analysis was performed using “Sweep AC Source” method”. Simulation time is shown in percentage relative to NL5 simulation time (NL5=100%). The time includes both simulation and graphs update.

Circuit	Simulation time, %					
	NL5	PSIM	Micro-Cap	LTSpice	PSpice	TINA
#1 – long RC chain	100	100	100	140	100	120
#2 – voltage multiplier (sine)	100	150	210	110	200	170
#3 – long LC chain	100	80	100	180	200	390
#4 – voltage multiplier (pulse)	100	Failed	230	190	550	1390
#5 – switched capacitors	100	Failed	110	Failed	730	Failed
#6 – boost converter (AC)	100	150	n/a	n/a	n/a	n/a

Simulation time, %



- Simulators tested: NL5 1.24, PSIM 6, Micro-Cap 9 (Evaluation Version), LTSpice IV, PSpice 16.2, TINA 7.
- Performance may improve or degrade significantly by adjusting simulation parameters and/or modifying schematic.
- Performance may vary on different computers.